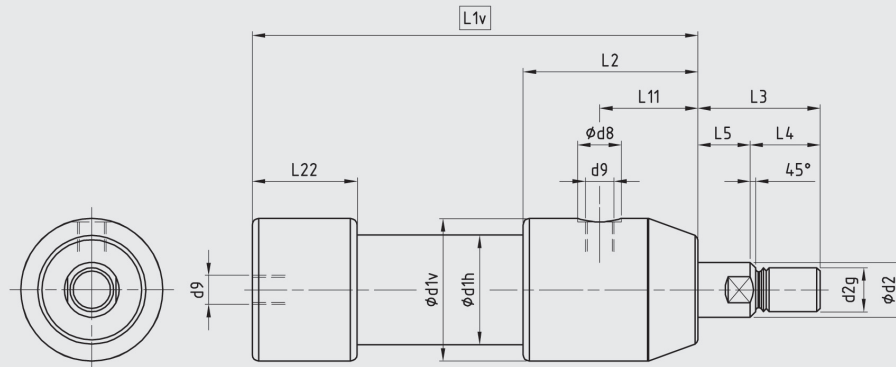
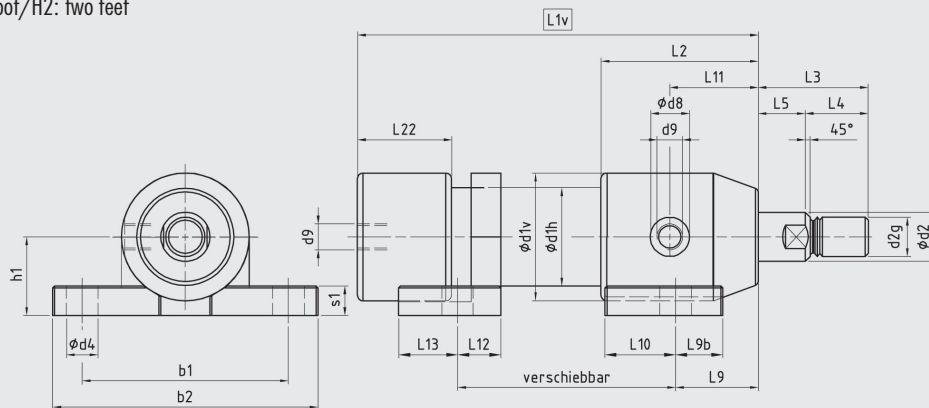


Dimension drawings/Dimensions

A Basic design



H/H2 H: front foot/H2: two feet



Piston Ø	20	25	32	40	50	55	63	70	80	90	100
d1v	35	42	52	65	80	90	100	110	125	135	150
d1h	26	33	40	50	65	70	80	90	100	112	124
d2-f7	12	16	20	25	32	32	40	40	50	50	60
d2g	M10	M12	M16	M20	M24	M24	M33	M33	M42	M42	M48
d4	9	11	13	16	17	17	22	22	26	26	29
d8	16	16	20	20	26	26	26	26	33	33	33
d9	G 1/8"	G 1/8"	G 1/4"	G 1/4"	G 3/8"	G 3/8"	G 3/8"	G 3/8"	G 1/2"	G 1/2"	G 1/2"
b1	60	70	85	105	130	140	155	170	190	210	230
b2	76	90	110	135	162	176	195	210	240	260	280
h1±0,1	22	25	32	40	50	56	63	70	80	90	100
s1	8.5	10	14	15	17	18	20	22	23	24	26
L2	61	61	72	80	95	100	107	115	125	132	145
L3	32	40	47	56	63	63	77	77	91	91	100
L4	16	22	26	32	35	35	45	45	55	55	60
L5	16	18	21	24	28	28	32	32	36	36	40
L9	36	33	39	42	50	54	59	63	69	72	80
L9b	17	20	20	24	25	28	30	32	34	37	40
L10	23	26	30	36	40	42	44	48	51	55	60
L11	31	31	39	45	53	58	65	72	79	85	90
L12	15	18	20	22	26	28	30	32	34	37	40
L13	20	24	27	30	35	38	40	43	45	50	54
L22	39	41	44	48	56	57	59	61	64	62	78
L23	45	45	53	55	67	67	68	68	72	70	82
L24	12	12	15	15	19	19	19	19	20	20	22

Functional type

Length measurements L1v (with standard cover design As1) and length measurements L1h (with cover design As4)

D/E/Ez	L1v = stroke +	91	96	112	124	141	150	161	174	185	197	209
	L1h = stroke +	97	100	121	131	152	160	170	181	193	205	213
Dbb	L1v = stroke +	103	110	128	142	161	170	183	196	209	221	237
	L1h = stroke +	109	114	137	149	172	180	192	203	217	229	241

Minimum length measurements L1v and L1h

L1v =	101	103	117	129	152	158	167	177	190	195	224
L1h =	107	107	126	136	163	168	176	184	198	203	228